

EXPERIENCE IT YOURSELF.



ILLINOIS HIGH-SPEED RAIL

CHICAGO TO ST. LOUIS

Girard Siding Environmental Assessment (EA) Public Meeting

May 23, 2013

Agenda

EXPERIENCE IT YOURSELF.

- » Program Overview
- » Girard Siding Project EA
- » Auburn to Shipman Track Improvement Project
- » Public Involvement Opportunities



EXPERIENCE IT YOURSELF.



Illinois High-Speed Rail Chicago to St. Louis: Program Overview



**ILLINOIS
HIGH-SPEED
RAIL**

CHICAGO TO ST. LOUIS



www.idothsr.org
www.connectthemidwest.com

Program Objectives

EXPERIENCE IT YOURSELF.

The overall purpose of this project is to enhance the passenger transportation network within the Chicago to St. Louis corridor, resulting in a more balanced use of the modal components, reduced travel time, increased service reliability, and enhanced safety.

Project Location

Chicago to St. Louis High-Speed Rail Route

EXPERIENCE IT YOURSELF.



**ILLINOIS
HIGH-SPEED RAIL**
CHICAGO TO ST. LOUIS



www.idothsr.org
www.connectthemidwest.com

Who's Involved?

EXPERIENCE IT YOURSELF.

Elected Officials

Business
Community

Regional
Agencies

General Public &
Interest Groups

Transportation
Providers

City/County
Technical Staff

Project Partners

- Illinois Department of Transportation (IDOT)
- Federal Railroad Administration (FRA)
- Union Pacific Railroad (UPRR)
- Amtrak
- Illinois Commerce Commission (ICC)
- Others

Support

- Parsons Brinckerhoff - Program Manager
- IDOT Consultants (PTB Advertisements) including Parsons Corp. for Tier 2 EIS
- UPRR Contractors/Consultants

Overall Project Tasks

EXPERIENCE IT YOURSELF.

- » Design and construction of main track, including concrete ties, welded rail, etc.
- » Realignment of curves
- » New second tracks and sidings
- » Grade crossing warning devices
- » Construction of non-complex grade crossings
- » Train control signaling (PTC)
- » Turnouts, culverts, bridges, fencing, etc.



Construction Accomplishments

EXPERIENCE IT YOURSELF.

» Since 2010, activities have included the:



- Installation of **237 track miles** of new rail
- Installation of **619,813 new concrete ties**
- Spreading of **1,252,129 tons** of stone ballast
- Initial renewal of **235 crossing surfaces** and **approaches**

Construction Accomplishments

EXPERIENCE IT YOURSELF.

- » Significant Grade Crossing Upgrades:
 - Completed diagnostics at **270 locations**
 - Extensive liaison with **IDOT Highways, locals, ICC, FRA**, others
 - Extensive **safety features** and **physical upgrades**



Benefits

EXPERIENCE IT YOURSELF.

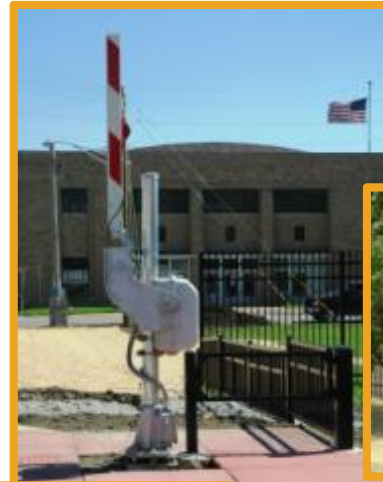
- » *Safety*
- » *New Passenger Cars and Locomotives*
- » *New Stations*
- » *Environmental*
- » *Service and Reliability*



Safety Improvements

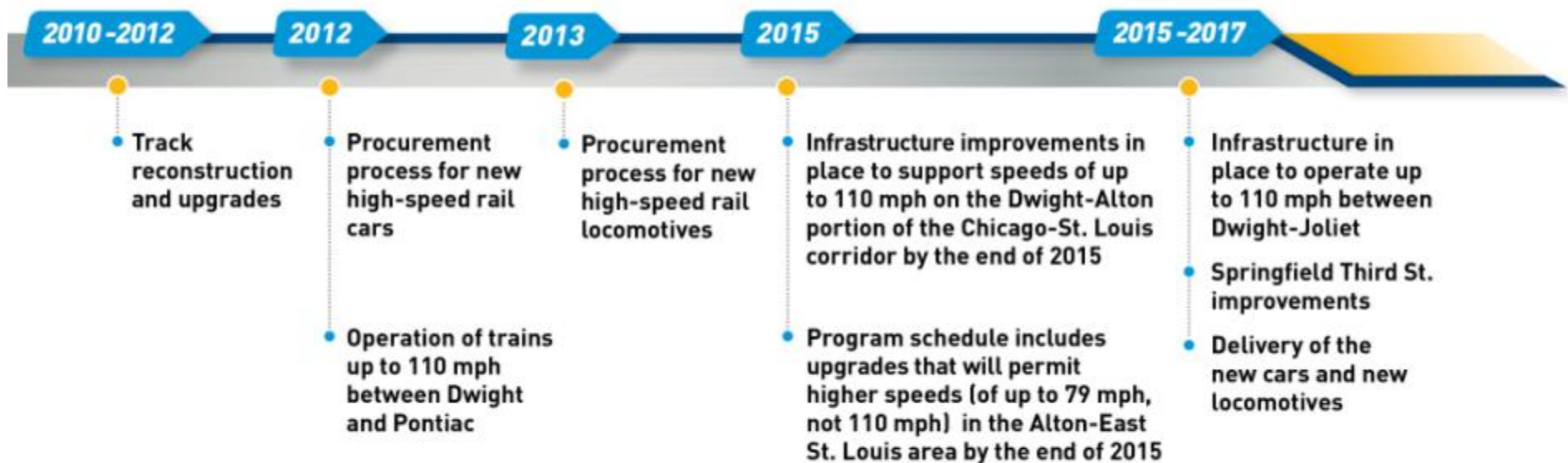
EXPERIENCE IT YOURSELF.

- » Four-quad vehicle gates
- » Pedestrian gate crossings
- » Improved road crossings
- » Signage
- » Fencing



Project Schedule

EXPERIENCE IT YOURSELF.



Current Program Budget: \$1.45 Billion

EXPERIENCE IT YOURSELF.

» Track & Structures	\$726.3 million
» Real Estate	\$ 16.3 million
» Stations	\$ 40.0 million
» Rolling Stock / Equipment	\$211.0 million
» Signaling & Communications	\$183.9 million
» Miscellaneous (Grade Crossing Approaches, Overhead Bridges, Fencing, etc)	\$ 61.6 million
» Professional Services (Program Management, Environmental / Design, Construction Oversight)	<u>\$211.4 million</u>

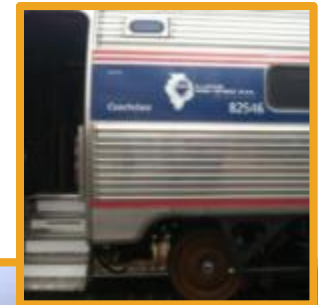
Total: \$1.45 billion

Note: This summary does not include the Tier 1 Environmental Impact Statement (EIS), Joliet Multi-modal Station, or other individual projects

110 MPH Service

EXPERIENCE IT YOURSELF.

- » October 19th High Speed Demonstration Run
- » Public Operation of Higher-Speed Service between Dwight and Pontiac
 - Began November 22, 2012
 - Three northbound (300, 302, and 304) and three southbound (301, 305, and 307) trains



Rail Car Procurement

EXPERIENCE IT YOURSELF.

» Rail Car Procurement

- Joint effort between California, Illinois, Michigan, and Missouri
 - Led by Caltrans
 - Competitive bid for 130 cars
- Awarded in November 2012 to Nippon Sharyo, USA
 - Facilities located in Rochelle, IL
 - Will utilize Buy American Program



EXPERIENCE IT YOURSELF.



Girard Siding Project Environmental Assessment



**ILLINOIS
HIGH-SPEED
RAIL**

CHICAGO TO ST. LOUIS



www.idothsr.org
www.connectthemidwest.com

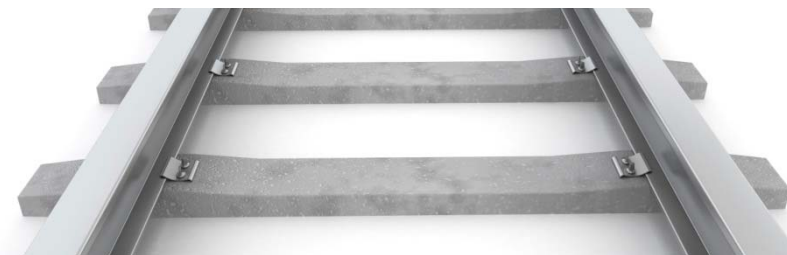
Project Location

EXPERIENCE IT YOURSELF.



» Girard Siding Project area follows the existing UPRR corridor

- Begins in Virden, IL and ends in Nilwood, IL



Alternatives Evaluated

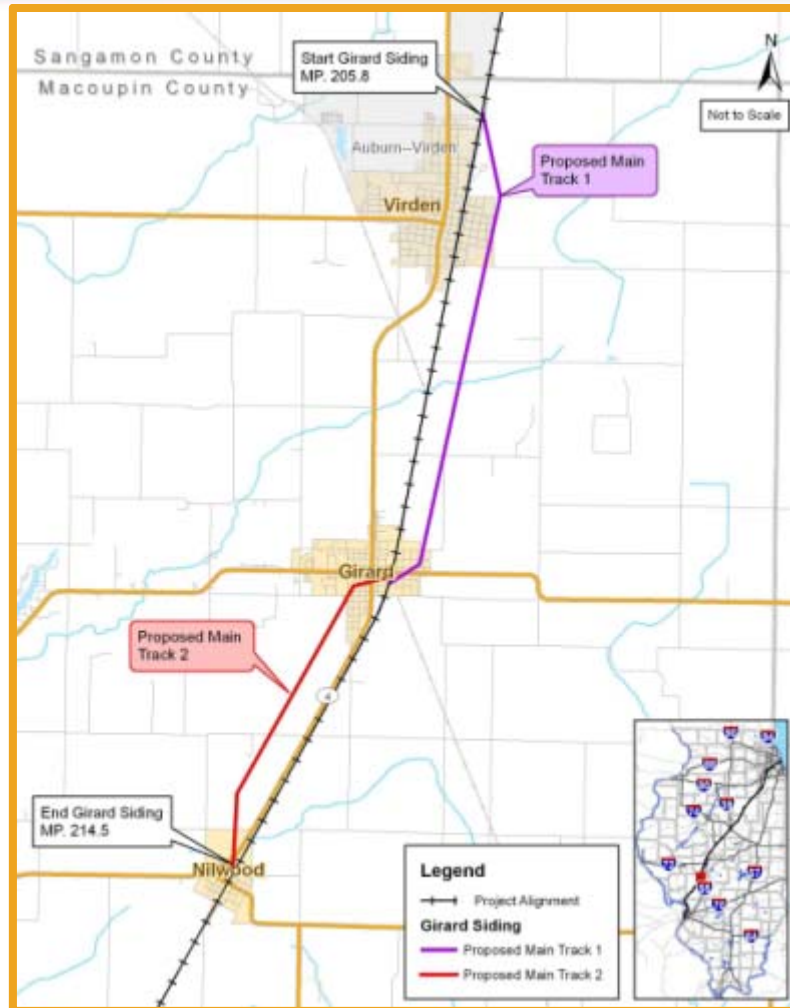
EXPERIENCE IT YOURSELF.

- » **The Environmental Assessment evaluates both a No-Build and a Build Alternative.**
- » **The No-Build Alternative:**
 - Includes a continuation of existing single track between Virden and Nilwood
 - Unable to accommodate high-speed rail traveling at 110 mph
 - Unable to provide operating flexibility for the growing rail freight traffic



Alternatives Evaluated

EXPERIENCE IT YOURSELF.



- » **The Build Alternative:**
 - Constructs a new 8.7 mile long siding track
 - Installs new signal equipment and switches
 - Installs new crossing gates
 - Allows for high-speed rail service
- » *The Build Alternative is integral element of the overall upgrades between Chicago and St. Louis*

EXPERIENCE IT YOURSELF.



Auburn to Shipman Track Improvement Project



**ILLINOIS
HIGH-SPEED
RAIL**

CHICAGO TO ST. LOUIS



www.idothsr.org
www.connectthemidwest.com

Auburn to Shipman Track Improvements

EXPERIENCE IT YOURSELF.

- » Provide **27 miles** of track upgrades
- » Install **new turnouts**
- » Reconstruct the **Carlinville siding**
- » Install **new signals, rail** and **concrete ties**



EXPERIENCE IT YOURSELF.



Additional Nearby Improvements



**ILLINOIS
HIGH-SPEED
RAIL**

CHICAGO TO ST. LOUIS



www.idothsr.org
www.connectthemidwest.com

Proposed Station Improvements

EXPERIENCE IT YOURSELF.

» Carlinville Station

- Proposed site near the current facility
- Plans in the conceptual design phase

» Environmental Documentation

- Categorical Exclusion (CE)
 - Reevaluation of 2004 Record of Decision (ROD)
 - Study began in March 2013
 - Anticipated Completion Fall 2013



Fencing

EXPERIENCE IT YOURSELF.

- » Railroad right-of-way (ROW) fencing:
 - Will be added within urban areas, select rural areas, and within 150 feet of all pedestrian crossing gate locations
 - Will serve as an added safety measure
 - Will be placed within one foot inside the Union Pacific Railroad ROW
 - Will be maintained by UPRR



Fencing

EXPERIENCE IT YOURSELF.

- » Fencing material types will be previewed with the local communities along the corridor.
 - **Ornamental fencing** will be used within urban areas.
 - **Chain-link fencing** will be used in locations adjacent to the railroad outside of an urban area.



EXPERIENCE IT YOURSELF.



ICC Safety Briefing



**ILLINOIS
HIGH-SPEED
RAIL**
CHICAGO TO ST. LOUIS



www.idothsr.org
www.connectthemidwest.com

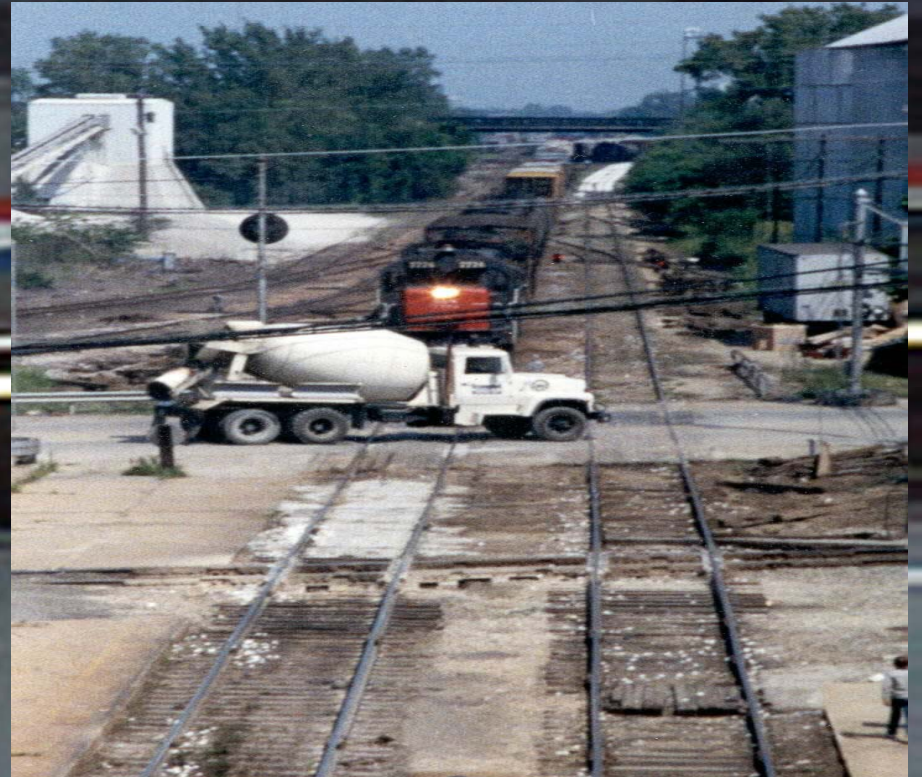
Public Safety in High Speed Rail Corridors

CHICAGO-ST. LOUIS HSR CORRIDOR



Michael E. Stead
Rail Safety Section
Illinois Commerce Commission

Public Safety Must Be the #1 Priority





Public Safety in High Speed Rail Corridors

➤ *Train Speeds will Increase*

- ✓ Current Max. Train Speed = 79 mph
- ✓ Proposed Max. Train Speed = **110 mph**

➤ *Crossing Warning Times will Increase*

- ✓ Current warning times = 35 seconds
- ✓ Warning times for max. speed trains: **80 seconds min.**

➤ *Train Volumes Projected To Increase*

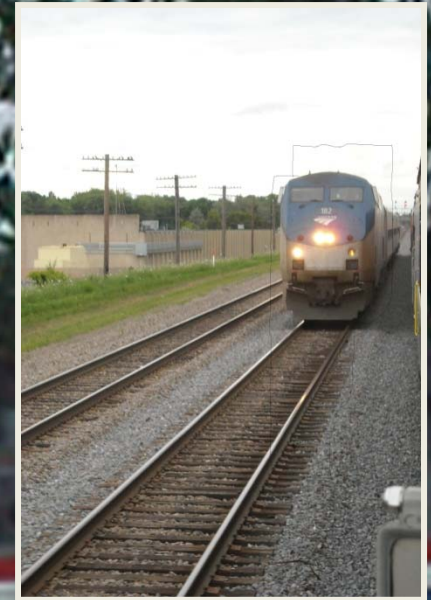
- ✓ **Passenger**
- ✓ **Freight**

➔ *More Trains = Greater Exposure*

Longer Warning Times... NOT Longer Delays



Any time is Train Time.....



94% of All Crashes are Driver Error



25% of Crashes Involve Driving into the Side of a Train



75% of Those Crashes Occur During Daylight Hours



Speed of an Approaching Train (Optical Illusion)

Slow moving Freight Train at
10 MPH

Amtrak Train traveling at up to
110 MPH



Flashing **Red** Lights Mean Stop

(You may not see an approaching train)





3,000 lbs.



12 oz.



80,000 lbs.



12 million lbs.

Public Safety in High Speed Rail Corridors

Considerations

- Public Crossings
- Private Crossings
- Field Crossings
- Pedestrian Crossings
- Trespassers



Public Safety in High Speed Rail Corridors

Proposed Safety Improvements

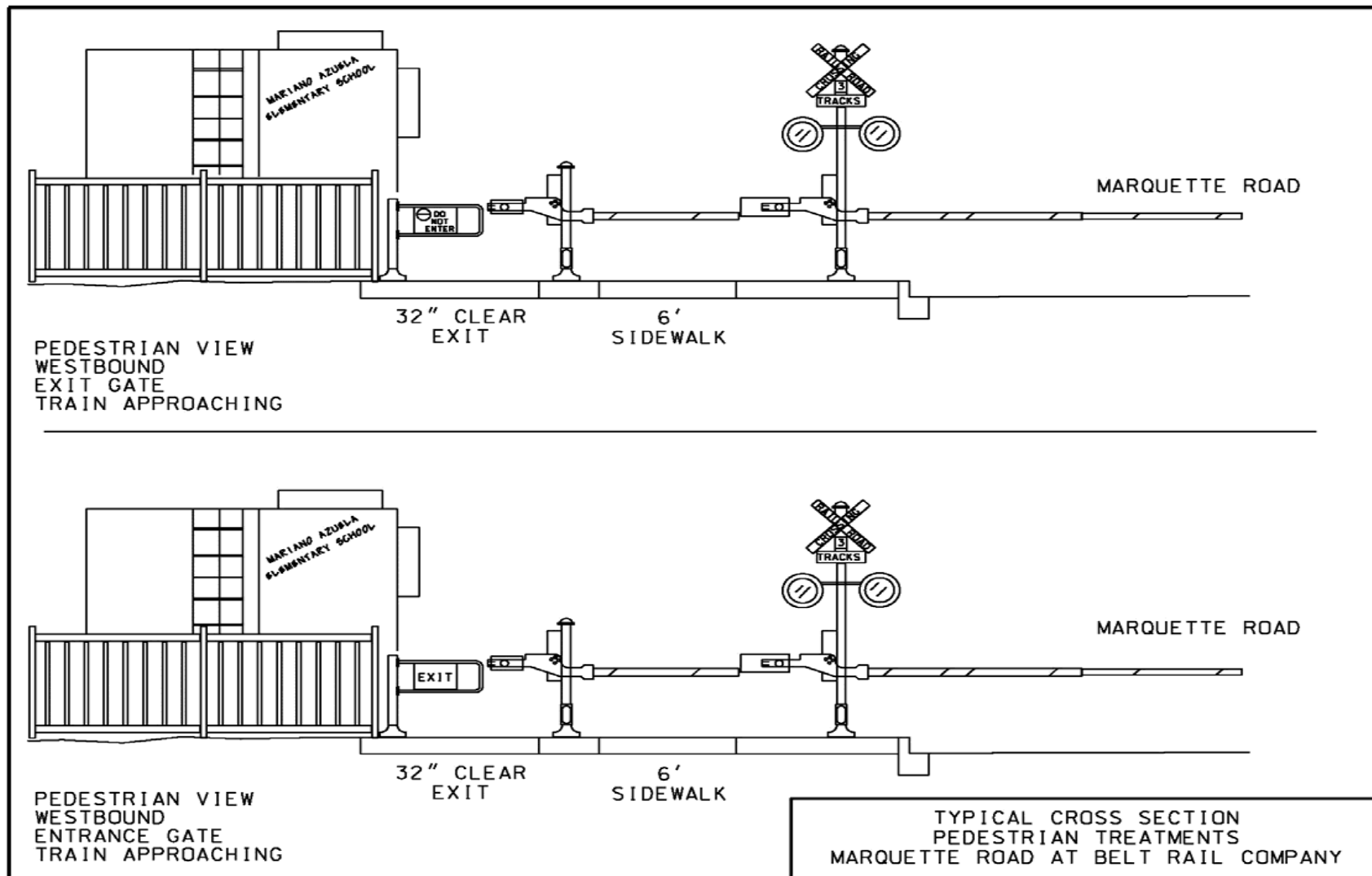
- Four Quadrant Roadway Gates
- Pedestrian Gates
- Right-of-Way Fencing
- Automatic Warning Devices - Private Xings
- User-Activated Devices - Farm Xing



Four Quadrant Gates



Pedestrian Crossings



Pedestrian Crossings (Safe Access)

Pedestrian Xing with
R.O.W. Access

Pedestrian Xing with
Restricted R.O.W. Access



Trespassers (Restrict Access to RR R.O.W.)



Trespassers

(Worn paths indicate dangerous and illegal access to crossing or walking along RR tracks)



Trespassing is the #1 reason for rail-related fatalities or injuries...



Trespassers

It is illegal for any person to walk across or along railroad tracks at any place other than an authorized crossing.



RailPictures.Net - Image Copyright © Bicot (Marc Caya)

Field Crossings (Safe Access)

Field Crossing w/o Active
Warning Devices



Field Crossing with User-
Activated Devices



Farm Equipment



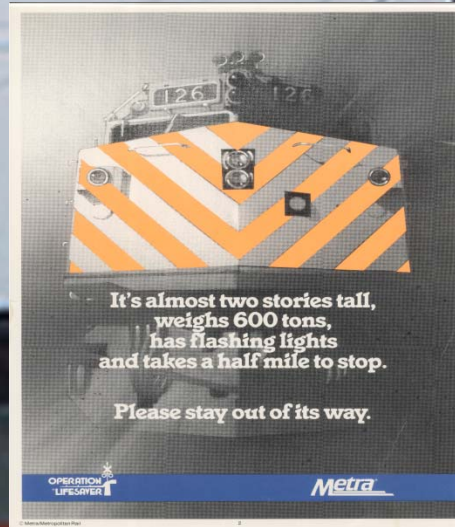
Railroad Safety Outreach & Education



**OPERATION
LIFESAVER®**

Illinois

Public Safety Outreach



Public Safety Outreach





Chip Pew
(312) 636-3034
cpew@icc.illinois.gov

EXPERIENCE IT YOURSELF.



Public Involvement Opportunities



**ILLINOIS
HIGH-SPEED
RAIL**
CHICAGO TO ST. LOUIS



www.idothsr.org
www.connectthemidwest.com

Public Involvement Opportunities

EXPERIENCE IT YOURSELF.

Stakeholder Outreach

Public Meetings &
Hearings

Stakeholder
Meetings/Briefings

Small Group
Meetings

Media Outreach

Fact
Sheets/Newsletters

Project Website:
www.idothsr.org

Project Hotline: 1-855-IDOT-HSR

Business Opportunities

EXPERIENCE IT YOURSELF.



» Visit the **Doing Business** section of www.idothsr.org.

- Find details about the bidding process and current business opportunities
- Find related links for detailed procedures

Additional High-Speed Rail Information

EXPERIENCE IT YOURSELF.

- » Visit www.idothsr.org for project specific information, business opportunities, and to comment on the Illinois High-Speed Rail Project
- » *Visit the Facebook Page:*
www.facebook.com/illinoishighspeedrail
- » *Call the Project Hotline:*
1-855-IDOT-HSR (436-8477)



Illinois Commerce Commission

EXPERIENCE IT YOURSELF.

Michael E. Stead
Rail Safety Program Administrator
Illinois Commerce Commission
527 E. Capitol Avenue
Springfield, IL 62701
(217) 557-1285
mstead@icc.illinois.gov



www.idothsr.org
www.connectthemidwest.com

EXPERIENCE IT YOURSELF.

QUESTIONS



**ILLINOIS
HIGH-SPEED
RAIL**

CHICAGO TO ST. LOUIS



www.idothsr.org

www.connectthemidwest.com

EXPERIENCE IT YOURSELF.

THANK YOU



**ILLINOIS
HIGH-SPEED
RAIL**

CHICAGO TO ST. LOUIS



www.idothsr.org

www.connectthemidwest.com